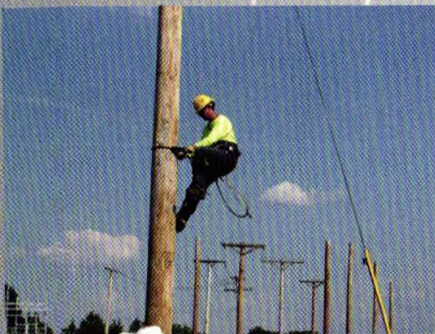


What Are The Program Requirements?

- Class A Commercial CDL (No permits)
- Valid DOT medical /physical card.
- Social Security Card
- Birth Certificate
- High School Transcript
- Diploma or GED. If submitting a GED, test scores must be included. High school transcripts through the last grade completed are still required.
- DD214, if you are a Veteran.
- DDF2384, if you are in the Reserves.
- Residency in SELCAT jurisdiction. (GA, FL, AL, MS, LA, TN, AR, NC & SC)
- Access to a computer with internet and a current email address.
- \$25.00 Application Fee

EDUCATION FOR A LIFETIME

• Skills • Knowledge • Safety • Attitude



Frequently Asked Questions

"Do I have to have experience?"
There is no experience required

"Do I have to have a CLASS A CDL to apply? What if I'm only 18?"
**Yes, a Class A CDL is required to apply. You may still apply if you are 18-20 and obtain a Class A CDL. **

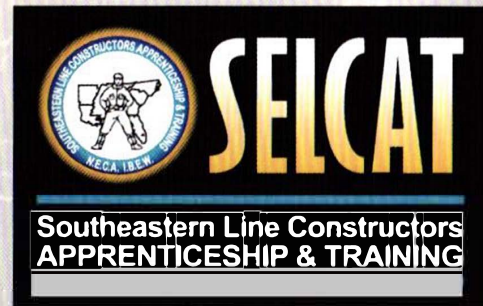
"Do I have to live in or move near Georgia?"
**You may live anywhere in SELCAT's jurisdiction. We work with contractor's throughout the southeast. **

"I don't have a copy of my diploma or transcripts can I still apply?"
*You must have your transcripts with at least one passing Math course obtained. If your transcripts provide a graduation date, that will work in place of an actual copy of your diploma.**



**90 Newnan South Industrial Drive
Newnan, GA 30263
(678)423-1338
www.selcat.com**

APPLY TODAY!!!!



Outside Electrical Lineman Apprenticeship Program

"EARN WHILE YOU LEARN"



If you or someone you know is interested in the Power Lineman Apprenticeship Program, this informational brochure can be the beginning of a very rewarding career!! Not sure about becoming a Journeyman Lineman? We also have a Substation Technician and Underground Technician Program!!



What Exactly Does A Lineman Do?

Electrical Power Linemen are the workers who build and maintain the power lines from the generating plants to all our homes, factories and stores.

They work on the high-voltage transmission lines, the substations, the distribution lines and even run the wires to the customer's meter.

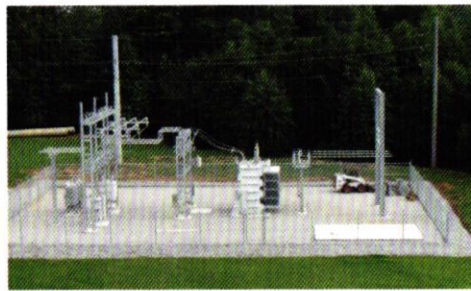
What is Apprenticeship?

Apprenticeship is an opportunity for inexperienced individuals to learn a career skill through actual "hands on" training, not by just reading about it in a book. Electrical Apprentices are actual full time employees of electrical contractors. They earn excellent pay and benefits while they are being taught these skills by master craftsmen.

Today, in addition to on-the-job training, apprentices get related classroom instruction.

How Long Does The Training Take?

To become a Journeyman Lineman our program requires a minimum of 7000 hours of on-the-job training which usually takes 3 to 3 1/2 years. Once graduated from SELCAT, you can choose to keep working where you are, or take your skills and abilities to build power lines anywhere in the country.



How Do The Advancements Work?

There are a total of 7 steps in the SELCAT Overhead Lineman Program.

Approximately every 6 months an apprentice advances to the next step. The apprentice gets a pay raise with each step increase, which is based on the Journeyman Lineman's scale. Once an apprentice completes the program, he/she then earns 100% of Journeyman's rate.

Sound Too Good To Be True?

Since 1941, the International Brotherhood of Electrical Workers (IBEW) and the National Electrical Contractors Association (NECA), have been working together as a successful partnership in training people to build electric power lines.

It is the practiced policy of SELCAT, in accordance with the Department of Labor's Bureau of Apprenticeship Training, to take affirmative action to locate, interview and rank all eligible applicants who may be interested. These duties are administered without regard to race, religion, marital status, sexual orientation or physical appearance. Women and minorities are encouraged to apply.

Benefits

Medical Insurance: that covers you and your dependent family, is provided by the electrical industry. This means you won't be seeing a deduction from your paycheck to pay for the insurance premiums. In addition to the medical coverage, there is dental and optical coverage as well. And the insurance is good anywhere in the USA. You don't have to go to certain "company" doctors or hospitals.

Retirement: plans range anywhere from 8% up to 25% of your gross pay depending on your area. This means the electrical contractors figure the retirement percentage based from your gross wages and pay that amount to your retirement account. Not into some big "slush fund" where your money gets lost. It actually goes to your account with your social security number on it. And like the insurance, you won't have a deduction from your paycheck where you had to match a certain amount. It's totally funded by the industry.

College Credit: is available to graduates of SELCAT. College credit is issued by the American Council on Education (ACE). These credits can be transferred towards continued college education.

Veterans: may be eligible for educational benefits while going through the SELCAT program.

